

Survey Map

In order to preserve the scale, the map should be printed in colour onto A3 paper.

When printing, select 'Actual size'.

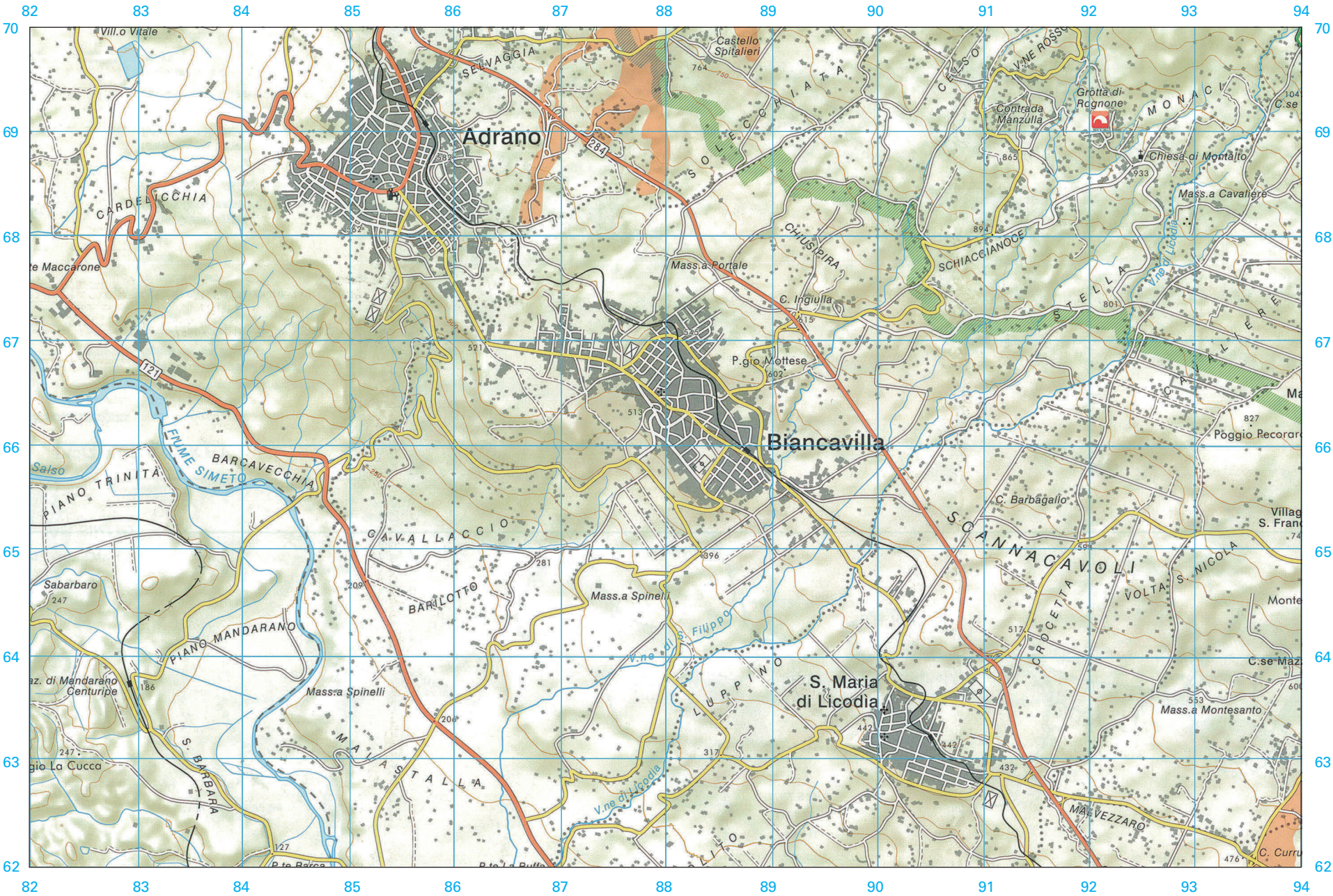
Do not select 'Fit' as this will re-size the map.

You may need to change the paper size to A3.

Ensure the orientation is Portrait.

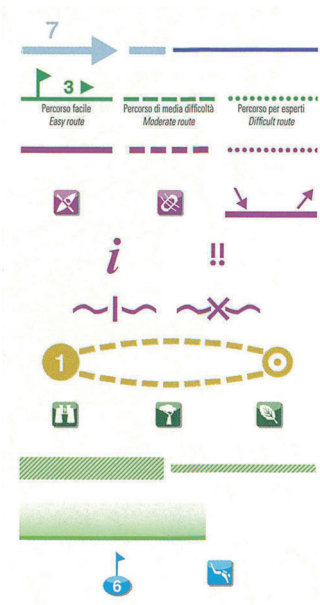


Biancavilla



Key

- motorway
- national main road
- other roads
- paths & tracks
- no vehicles allowed
- railway with station and tunnel
- cemetery, castle, fountain
- church, chapel, tabernacle, ruins
- house / building
- funicular, chair lift, ski lift
- provincial boundaries
- hiking trails
- alpine walks, climbing, refuges
- cave (easy to access), cave (difficult to access)
- lava flows



232

The contour interval is 50 metres

river

Scale 1:50000

